



**Gabriel**

**REALTY & BROKERAGE**

**Avída** Towers  
Riala

LIVE WITHOUT COMPROMISE





**AyalaLand**

**LARGEST AND MOST EXPERIENCED**  
REAL ESTATE DEVELOPER IN THE PHILIPPINES.

# AYALA is the first to develop Integrated Mixed Use Communities in VisMin

Cebu Business Park 



 Cebu I.T. Park





Cebu I.T. Park

## Cebu's Preferred IT and BPO Destination



**27 hec**

Global  
Gateway

**1<sup>ST</sup> PEZA**

Accredited IT  
Park

over  
**P24.6 b**  
land & infra  
investments

Home to over  
**70%**  
of Cebu's BPO  
industry

**68,997**  
Jobs  
generated

over  
**200**  
local & foreign  
companies

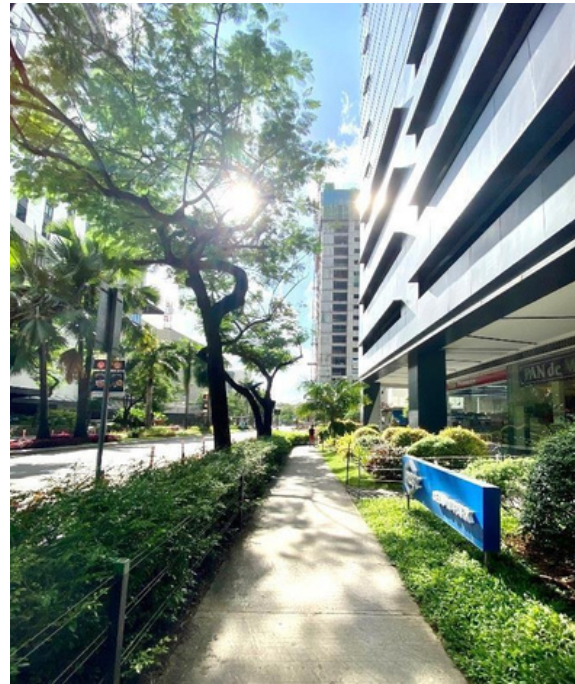
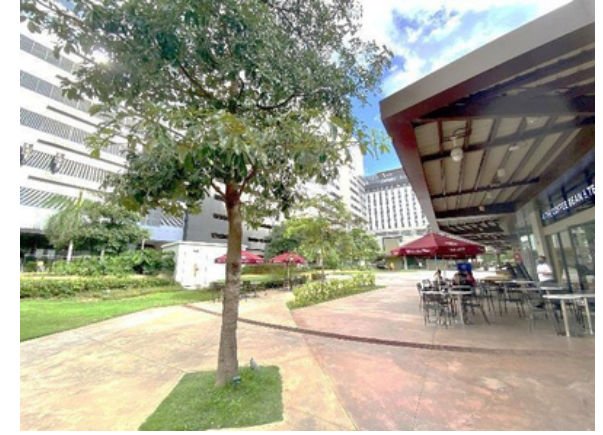
*Why Cebu IT Park?*



# ***Bustling***

Its retail and dining hub complement the lifestyle of the growing community at Cebu IT Park.

Plus other establishments that offer 24/7 dining and entertainment.



## ***Why Cebu IT Park?***



## *Green*

Garden Bloc offers relaxing and re-energizing space for its residents and busy office workers.



*Why Cebu IT Park?*



# Ayala Mall

At the heart of the estate, is the 2nd Ayala Mall in Cebu and Seda Hotel along with 2 BPO Towers enhancing work and lifestyle experience.



P8 Billion  
INVESTMENT

*Why Cebu IT Park?*





Home of  
**Avida Towers Riala**



**Avida Towers RIALA Virtual Tour**

***Why Cebu IT Park?***



**Avída** Towers  
Riala

**TOWER 4**



# SITE DEVELOPMENT PLAN

Tower 1 – Completed

Tower 2 – Completed

Tower 3 – Completed

Tower 4 – Ready for  
Move-in Tower 5 –

Turnover 2025

21,246 sq.m.

TOTAL LAND AREA

Owned and Developed by  
Avida Land Corp



# Riala Tower 4 Ready for Move-In



# BUILDING FEATURES

- Main lobby for each building
  - Three (3) elevator units per building
  - Five (5) levels of podium parking
  - Emergency power for common areas & inside (lights, TV & refrigerator)
  - units Garbage room per floor
  - Fire alarm and sprinkler system
  - Mailbox per unit located at each building lobby
  - Water tanks for emergency water supply
  - Water tanks for emergency water supply
  - Electricity, telephone, cable TV and internet-ready units
  - 24-hour security services & CCTV's in critical areas
  - 24-hour security services & CCTV's in critical areas

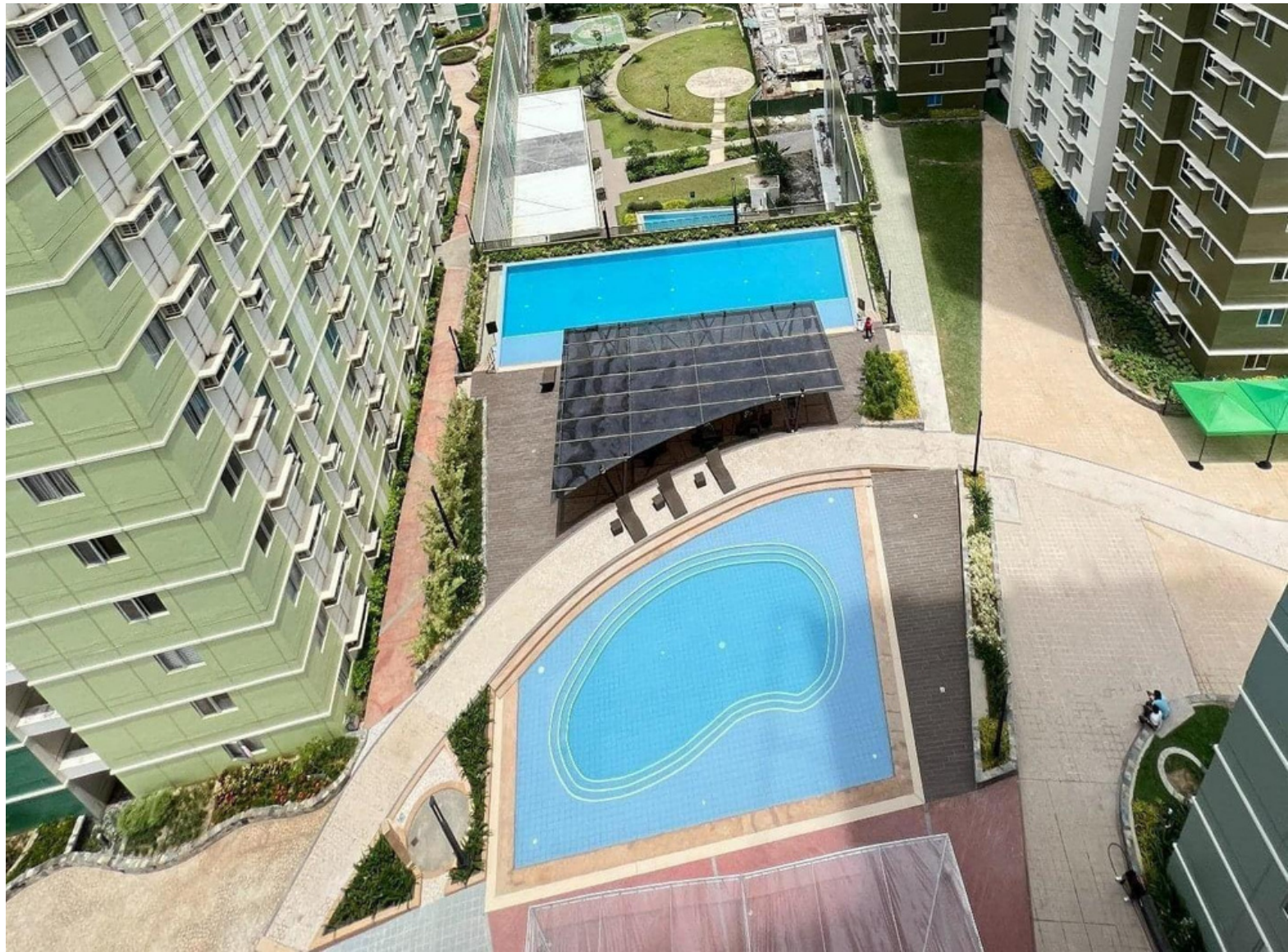
# Amenities

## Active Zone

- Lounge Pool
- Multi-Purpose Hall
- Outdoor Fitness Area
- Teen Zone
- Play Zone
- Shooting Court

## Passive Zone

- Lap Pool
- Sun Deck
- Kiddie Pool
- Courtyard
- Pocket Gardens





Artist's Perspective

*Grand Lawn and  
Pocket Gardens*



Artist's Perspective

*Swimming Pools*





# COMMUNITY AMENITIES

Adult & Kiddie Swimming Pool

Multipurpose Hall

Shooting Court

Children's Play Area

Garden Areas

16 Retail Spaces at Tower 1 & 2

# RETAIL STRIP at the Towers

NOW OPEN



MerryMart  
Don Jjang Korean  
BBQ Chill Laundry  
Lounge Alessi  
Coffee Lab  
KBC Restaurant  
Thai Boran  
(Massage)



# TYPICAL FLOOR PLAN (TOWER 4)

Facing Mountain Ranges and Sunset



Facing Cebu IT Park



Facing Courtyard

Facing Grand Lawn

- LEGEND:
- STUDIO
  - 1 BEDROOM
  - 2 BEDROOM

- Studio
- 1
- Bedroom
- 2



# TYPICAL STUDIO UNIT



**22.80 sq.m.**  
APPROX. FLOOR AREA



## TYPICAL 1 BEDROOM UNIT



**40.69 sq.m.**  
APPROX. FLOOR AREA



*Actual Dress-up Unit*

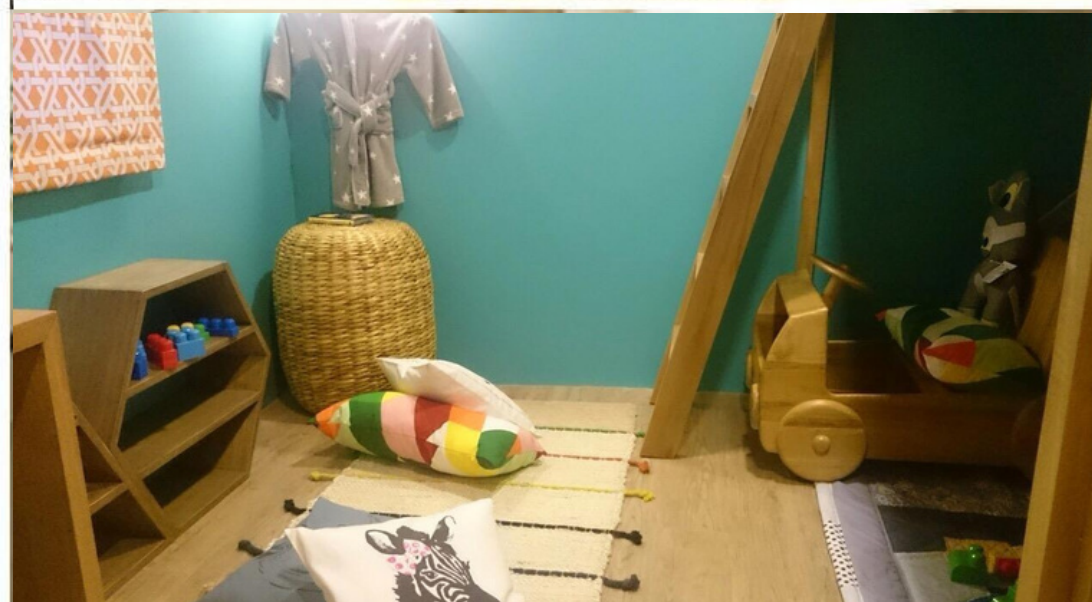


*Actual Dress-up Unit*

## TYPICAL 2 BEDROOM UNIT



**57.10 sq.m.**  
APPROX. FLOOR AREA



# Why Avida Towers Riala?

## URBAN LEISURE LIFESTYLE

- Approximately 10,000 sq.m. of green areas and open spaces
- Sensible and convenient amenities
- 24/7 security & well-maintained facilities

## GREEN &

Avida Towers  
Riala



# THE ADDRESS OF CHOICE

Cebu IT Park is the preferred living destination for young professionals and families given its prime location.

Located within Cebu IT Park, Avida Towers Riala offers easy access to places of work, schools, entertainment and shopping.





A hand in a dark suit jacket points towards a bar chart with a white line graph overlaid. The bars represent increasing value, and the line graph shows an overall upward trend. The background is a blurred office setting.

# Avida Towers Riala

## VALUE FOR MONEY & VALUE APPRECIATION

2 Ways to earn in Real Estate

- Rental Income
- Value Appreciation

Avida Towers Riala

158% Increase in Value since  
its launch in 2012

Up to 25K Rental for Studio Units

# Riala Tower 4 Ready for Move-In

Avail of our

## EARLY MOVE-IN Promo

Choose from our flexible  
10% Downpayment or  
No Spot DP to move in!

Terms and Conditions Apply.  
Valid only this December 31, 2023

Contact our accredited Salesperson for more details.





**Avída** Towers  
Riala

LIVE WITHOUT COMPROMISE

FOR TRAINING PURPOSES ONLY V04232020



# Gabriel

REALTY & BROKERAGE

*Talk to Us*

[WWW.GABRIELREALTORS.COM](http://WWW.GABRIELREALTORS.COM)